

# 8610 TOW TRACTOR

Adaptable to a wide variety of operations, the 8610 Tow Tractor is durable and dependable, ideal for cart order picking and horizontal transport in heavy-duty and high throughput applications. Our exclusive ACR System™ provides longer battery life, quick acceleration and smooth speed control for enhanced productivity and operator confidence—enabling you to move more pallets per shift for a lower total cost of ownership

## DURABILITY

- + Longer truck life with a steel-reinforced frame that guards against impact, protecting critical components
- + Enhanced operation in low temperature environments with cold storage conditioning that matches hydraulic, mechanical, and electrical components to temperature classification to ensure peak performance
- + Increased protection with the optional heavy duty bumper guard for demanding applications

## PRODUCTIVITY

- + Fully customizable, the programmable travel speeds can be set to match the application and the skill level of the operator for maximum throughput
- + Quicker acceleration allows the operator to get up to speed faster
- + Reduced steer efforts up to 90% for smoother controlled operations at all speeds with PowerSteer
- + Decreased operator fatigue with a low 8.3" step height



## QUICK SPECS

CAPACITY	10,000 lbs
BATTERY	24 volt
TRAVEL SPEED	9 mph

## iWAREHOUSE® INTELLIGENT WAREHOUSE SOLUTIONS

The industry's most comprehensive and scalable telematics suite combines warehouse metrics with real-time operator and fleet data, allowing you to leverage valuable information directly from your fleet, assets and workforce. More data, more insight, more decision-making power – so you can achieve warehouse optimization across your entire operation. Opportunities include:

- + recommendations on right-sizing your fleet
- + management solutions and suggestions to optimize labor efficiency
- + asset maintenance and management
- + tracking/controlling lift truck movements and locating personnel/assets



If you're looking for a partner with the tools and experience to help you run better and manage smarter, contact us today at 1-800-235-7200 or visit us at [raymondcorp.com](http://raymondcorp.com).

# RAYMOND

# OPTIONS FOR OPTIMIZED PERFORMANCE

---



## OPERATOR COMPARTMENT SENSOR SYSTEM

Reinforces the need for operators to assume the proper operating position through sensors in the floor of the operator compartment. Customizable to the application, OCSS can be configured to best fit the application.\*

*\*For more information, see Raymond Lift Truck Features Brochure.*

---

## TOW HITCH OPTIONS

Choose from either the pin and clevis or automatic coupler tow hitch which increases productivity by eliminating the need for the operator to leave the compartment to connect or disconnect carts or trailers by automatically closing when the ring on the trailer is pulled into the hitch.



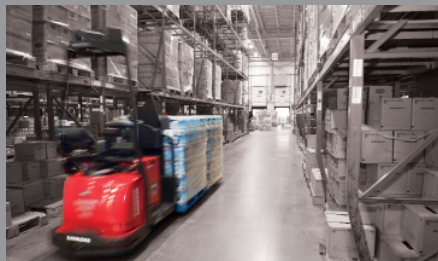
## ACCESSORY BAR & STORAGE TOTE

Compatible with any RAM-mounted attachment, the accessory bar with optional power hook-up provides 10 amp service across 4 power plug connections for easy integration with a variety of accessories such as scanning holsters, work lights, and fans. The storage tray helps keep tools organized and at the operators' fingertips for enhanced convenience and productivity throughout the shift.

---

## TYPE EE RATING

Provides truck and battery configurations for classified locations as defined in NFPA 505.



## OPTIMIZE YOUR ALLOCATION OF RESOURCES

The Raymond Courier automated tow tractor makes simple work of automating repetitive and time-consuming hauls that are labor intensive but don't require skilled attention so your operators can focus more of their efforts on value-added tasks.

Contact your local sales and service center for more information optimizing and automating your warehouse operations.

If you're looking for a partner with the tools and experience to help you run better and manage smarter, contact us today at 1-800-235-7200 or visit us at [raymondcorp.com](http://raymondcorp.com).

---